

OUT OF THE DARKNESS

Shines

*Bulbs* **THAT LAST  
4 EVER**



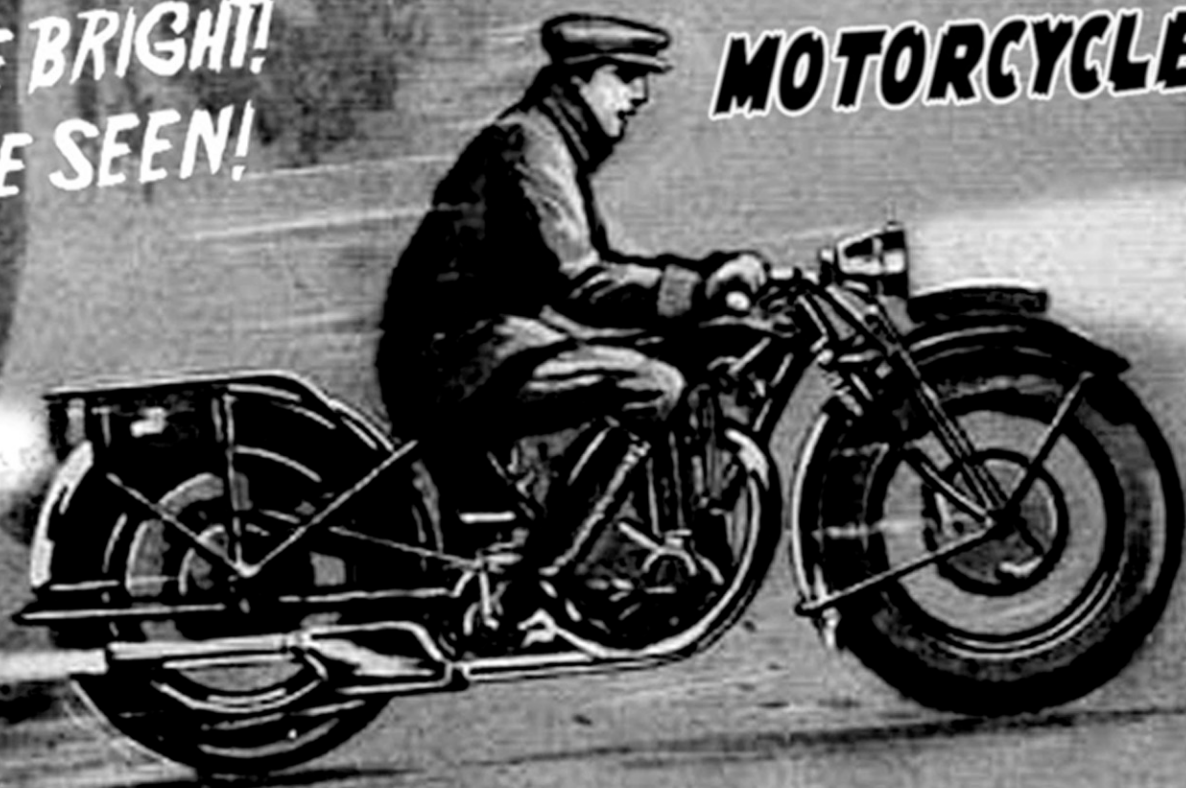
The Choice  
of

**LEADERS**

FOR ALL TYPES OF

**MOTORCYCLES**

**BE BOLD!  
BE BRIGHT!  
BE SEEN!**



You can pay less elsewhere, but you will not reap the benefits enjoyed by 1000's of satisfied customers. Bulbs That Last 4 Ever utilises the highest quality materials available & is the only constructor that will create a unique lighting system specific to your needs. Visit our website & compare.

The proof is in the Illumination!

[www.bulbthatlast4ever.com](http://www.bulbthatlast4ever.com)

LEFT BLANK INTENTIONALLY.

## **Model: 679-SI “Self-Install” LED Taillight Conversion Kit** **914 Installation Instructions For Brit Bikes (1973 to 1983):**

Thank you for choosing this Bulbthatlast4ever™ LED Conversion Kit for your Lucas Taillight. This Kit has been designed for optimum installation in a reproduction Lucas style taillight assembly. Installation can also be performed into a genuine Lucas taillight assembly; however some of the steps outlined here may vary and may or may not require modifications to the LED Board to fit this type of light assembly. Modifications to the LED Board are not suggested and will affect your warranty, review the "Product Warranty Agreement" attached to these instructions for more details.

Before you start to install this LED Taillight Conversion Kit, carefully read and follow these installation instructions. Expect installation to take approximately 30 minutes, utilizing a #2 Philip screwdriver, 5/16" {8mm} combination wrench, hacksaw or rotary tool, set of pliers, power drill with a 1/8" or metric equivalent drill bit, 10-32 or M5 X .8mm threading tap, and a set of jeweler's screwdrivers.

### **Getting Started:**

Hardware Check List:

1.  Qty 1, Wire Cable Set w/ 4.5 mm Bullet Connectors
2.  Qty 2, 10-32 x 7/8" Hex Screws (Not Used)
3.  Qty 2, 10-32 x 1 1/2" Hex Screws
4.  Qty 2, 10-32 Small Pattern Hex Nuts (Not Used)
5.  Qty 2, 3/16" Nylon Spacers (Not Used)
6.  Qty 2, 1/4" Nylon Spacers

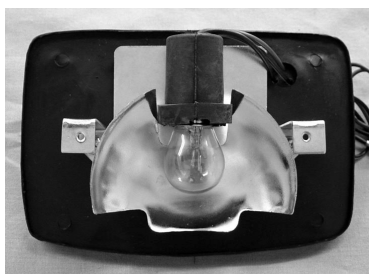
*Notes: This kit is supplied with all the necessary hardware to install this kit in either a 679 or 914 taillight assembly. There will be additional hardware left over after performing this installation!!!*

### **Installation:**



**Figure 1**

1. It is recommended that you first remove the taillight, which is to be converted from the motorcycle as shown in Figure 1. This will help the installation go along more smoothly.



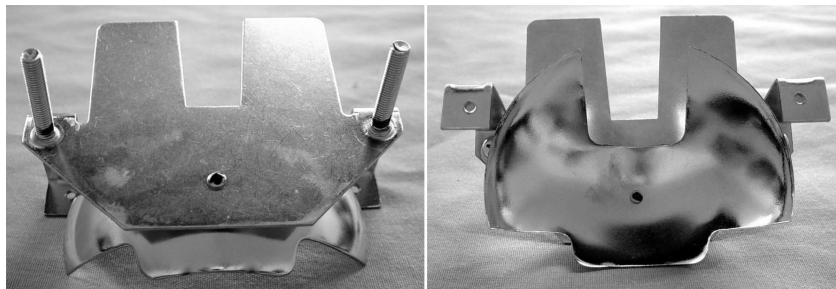
**Figure 2**

### **Disclaimer:**

Under no circumstances will Bulbthatlast4ever or its representatives be responsible or liable for any incidental or consequential property damages or personal injuries arising from or in connection with the use or installation of any of the listed foregoing products or devices. Rev. 3/07

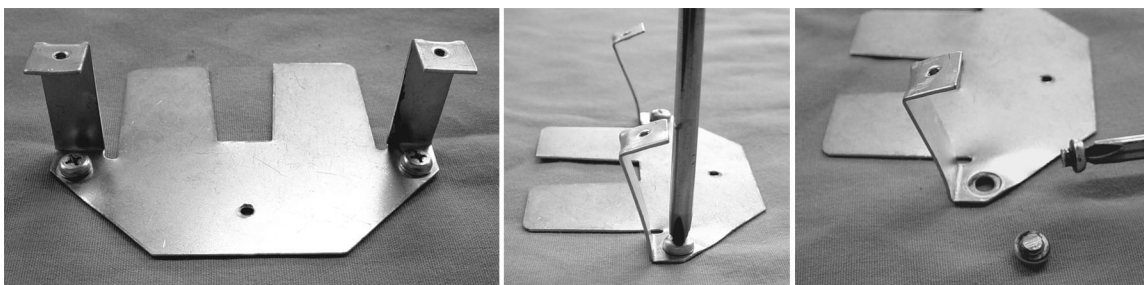
**Model: 679-SI “Self-Install” LED Taillight Conversion Kit**  
**914 Installation Instructions For Brit Bikes (1973 to 1983):**

2. Remove the lens from the taillight assembly and all the hardware that secures the reflector assembly to the rubber backing pad. Refer to Figure 2 for more details.



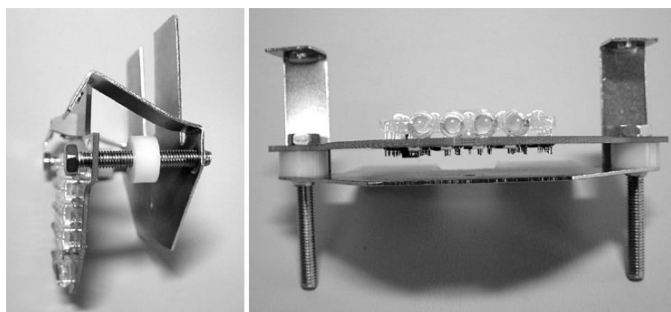
**Figure 3**

3. Remove the reflector assembly from the rubber-backing pad, then the bulb assembly (pull the entire bulb assembly up to remove). Then cut the 2 mounting studs using a hacksaw or the Rotary Tool, cut them close as possible to the back plate (the marked area) as shown in Figure 3 (left). Turn over the assembly and then drill the rivet as in Figure 3 (right) holding on the reflector using the drill with 1/8" or metric equivalent drill bit. Drill the rivet until the reflector can be easily removed.



**Figure 4**

4. With the screw studs removed from the reflector plate, as shown in Figure 4 (left). Bend the 2 lens mounting tabs far enough back to access the screw heads clearly, as in Figure 4 (center). Using a #2 Philips screwdriver, start turning the screw head counter-clockwise until it is removed from the plate, as shown in Figure 4 (right). Then follow by passing the threading tap (10-32 or M5 X .8mm) through the hole to clean out any debris left behind. Repeat process for the other side.



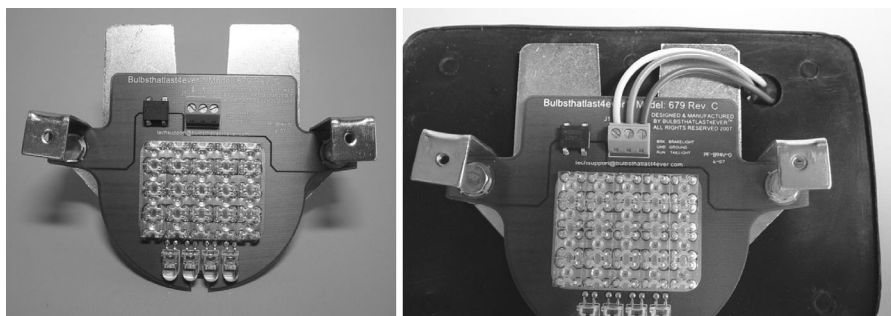
**Figure 5**

5. Using both the 10-32 x 1 1/2" Hex Screws and 1/4" Nylon Spacers, pass them through the LED Board in the order shown in Figure 5 (left). Using a 5/16" {8 mm} wrench, start the threads of the screws into the reflector plate. Once both screws have been started, tighten them firmly against the LED Board and then bend the mounting tabs as close as possible to their original positions as in Figure 5 (left).

**Disclaimer:**

Under no circumstances will Bulbthatlast4ever or it's representatives be responsible or liable for any incidental or consequential property damages or personal injuries arising from or in connection with the use or installation of any of the listed foregoing products or devices. Rev. 3/07

**Model: 679-SI “Self-Install” LED Taillight Conversion Kit  
914 Installation Instructions For Brit Bikes (1973 to 1983):**



**Figure 6**

6. Install the converted reflector plate shown in Figure 6 (left) into the rubber-backing pad. Then feed the preassembled wires into the back of the rubber backing plate from behind. Continue to feed all the wires through so that they can reach the LED Board’s terminal block. Insert the White wire into the left slot, the Green wire into the center slot, and the Brown wire into the right slot as shown in Figure 6 (left). Then tighten the terminal block screws using a flat-blade jeweler’s screwdriver.
7. Congratulations, your taillight assembly has been successfully converted to an ultra-bright LED Taillight. Please install the lens back onto the taillight assembly. Then install the taillight back onto the motorcycle.
8. All there’s left to do is connect the wires to your bike’s wiring harness. Simply plug in the compatible bullet connectors into your existing Lucas wire harness, as per Table 1.

Cable Assy Color	Function	Lucas Harness
White	Brake Light	Brown
Brown	Running Light	Brown/Green
Green	(-/+ ) Ground	Red or Chassis

**Table 1**

On-line Technical Support available by e-mail at [techsupport@bulbthatlast4ever.com](mailto:techsupport@bulbthatlast4ever.com)

**Repairs/Returns:** Please do not return the unit to the retail that it was purchased from, they will not be able to honor our warranty. Please visit this webpage first <http://bulbthatlast4ever.com/returns.html> or call our Help Line at 818-239-2683 for returning instructions.

**Warranty Info:** Please refer to the attached “Product Warranty Agreement” for more details.

**Warning:** Excessive lengths of time (no greater than 5 minutes at a time) during use in “Brake Light” mode may cause over-heating of the LED Board Assembly. This may cause damage directly to the LED Board or its components, which is not covered under the “Product Warranty Agreement”. Please verify that your electrical system in good operating condition, before use. It is also important to check the brake light switch for proper operation and adjustment.

*Failure to heed these warnings will subject the unit to the rules outlined in the "Product Warranty Agreement" that deal with the grounds that voids the warranty.*

**Disclaimer:**

Under no circumstances will Bulbthatlast4ever or it's representatives be responsible or liable for any incidental or consequential property damages or personal injuries arising from or in connection with the use or installation of any of the listed foregoing products or devices. Rev. 3/07



## **Product Warranty Agreement:**

Bulbthatlast4ever warrants all our products, standard, custom, or otherwise against defects in material or workmanship as follows:

1. For a period of 365 days from the date of purchase if this Product is determined to be defective, Bulbthatlast4ever will repair the Product at no charge. After the 365 days period, you must pay a \$10 "Evaluation Charge", labor rate of \$15 per hour, and cost of replacement components. This warranty does not cover cost incurred in connection with the use of un-approved aftermarket accessories used with this Product.
2. To obtain warranty service, you must fill out a "Request for Repair" Form available on-line at <http://www.bulbthatlast4ever.com/contact/returns.html> or call our Help Line at (1) 818-239-2683 for a "Return Product Authorization". Package the product in either its original packaging or some other packing offering an equal degree of protection. Then ship the package to Bulbthatlast4ever as per the information provided on the "Request for Repair" form or provided to you over the phone. The return shipping cost is the sole responsibility of the sender.

This warranty does not cover the following items listed herein, any implications of following items "WILL VOID" the Product warranty immediately and indefinitely, but are not limited to the listed below:

- Cosmetic damage or damage due to acts of God, accident, misuse, abuse, negligence, commercial use, improper use or maintenance, connection to improper voltage supply, or attempted repair by anyone other than a facility authorized by Bulbthatlast4ever to service this Product.
- Unauthorized customer or end-user modifications, such as grinding, filing, cutting, drilling, or by any other mechanical means with intent to alter the shape or size of the printed circuit board assembly/ies.
- Installation of non-factory approved replacement parts soldered into/onto the printed board assembly/ies such as but not limited to resistors, LEDs, headers, or any other electronic component active or passive used in or on our products. In the case of printed circuit board assembly/ies with factory omitted components, inserting and soldering components or anything into these locations.
- Improper handling of Class I or Class II ESD (Electro-Static Discharge) rated components as per the individual component manufactures handling procedures or datasheet precautions.
- Any damage received to any of the electrical pathways (traces) of the printed circuit board assembly/ies by one more but not limited to the following means, electrical overload, mechanical interference, environmental conditions, deliberate damage inflicted by human or any man-made machine, and/or improper installation of the product.
- Any damage received to the printed circuit board assembly/ies that has resulted due to contact with any type of liquid or fluid, natural or otherwise, but not limited to the following examples, water (fresh or salt-water), gasoline (petrol), any petroleum based products, solvents or cleaners used outside of the manufacturing process.
- Damages that are sustained by accidental damaged such as being involved in a motor vehicle accident of any kind. Accidentally dropping the product onto any surface harder than the printed circuit board assembly/ies or its components.
- Damages that may occur from a vehicle's electrical or charging system that is found not to be properly functional to the manufactures specifications.

Proof of purchase in the form of a bill of sale, receipt invoice, or vendor sales slip, which is evidence of that the unit is within the Warranty period must be presented to obtain warranty service.

**Bulbthatlast4ever reserves the right to refuse any product warranty based on any reason listed above. Bulbthatlast4ever also reserves the right to honor or refuse any warranty repair for any reason based upon any signs or suspicion of product tampering to the above-mentioned Product.**

**This Product Warranty Agreement precedes all previous warranties or agreements.**